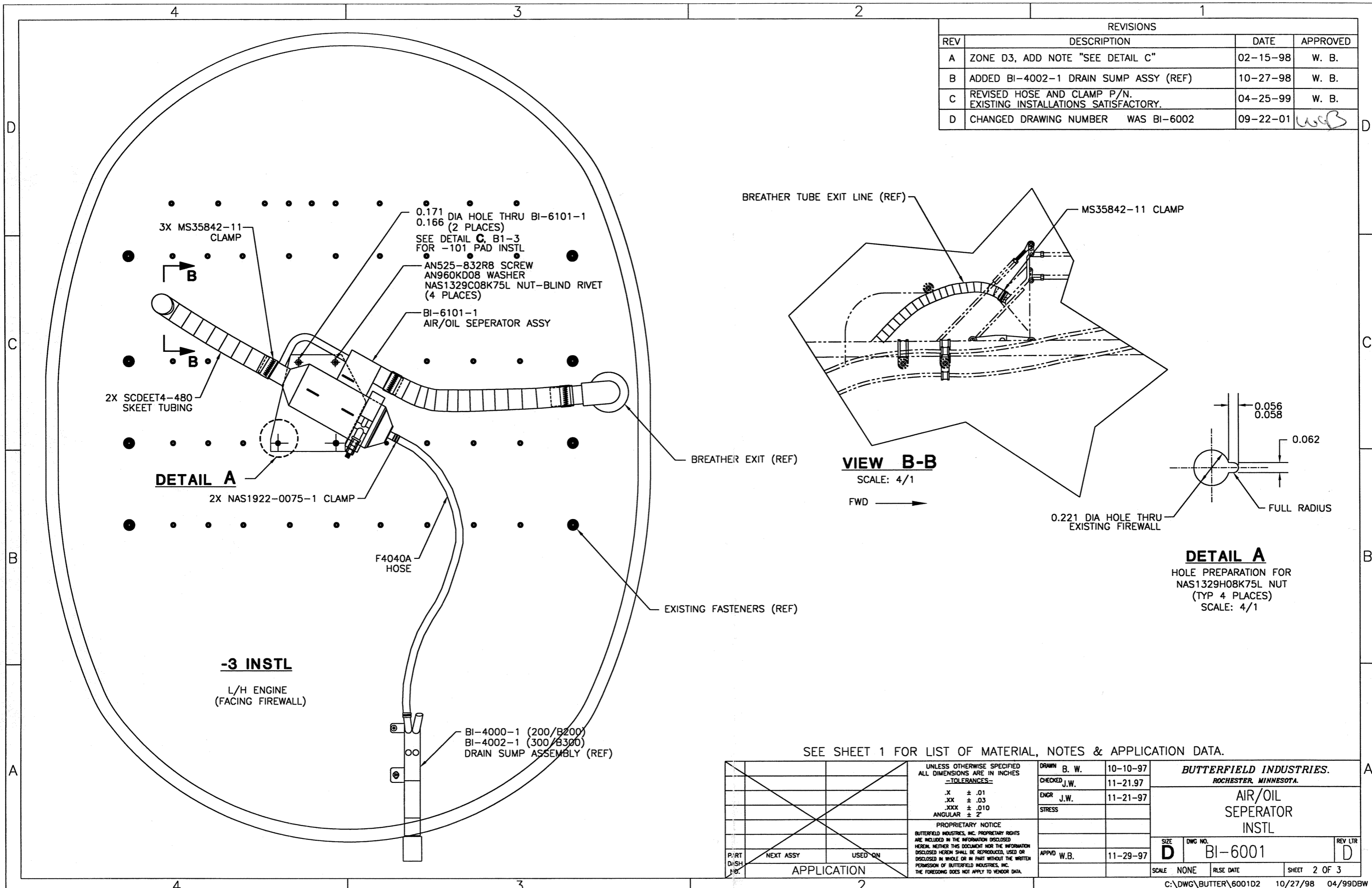


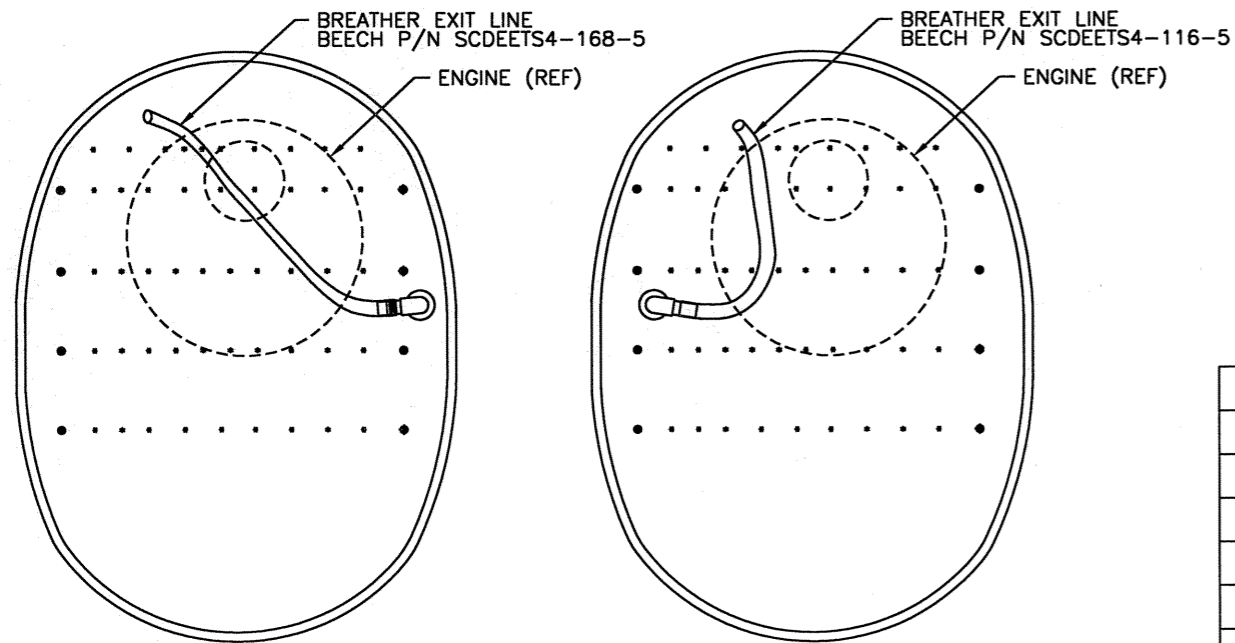
REVISIONS			
REV	DESCRIPTION	DATE	APPROVED
A	ZONE D3, ADD NOTE "SEE DETAIL C"	02-15-98	W. B.
B	ADDED BI-4002-1 DRAIN SUMP ASSY (REF)	10-27-98	W. B.
C	REVISED HOSE AND CLAMP P/N. EXISTING INSTALLATIONS SATISFACTORY.	04-25-99	W. B.
D	CHANGED DRAWING NUMBER WAS BI-6002	09-22-01	W.B.



SEE SHEET 1 FOR LIST OF MATERIAL, NOTES & APPLICATION DATA.

UNLESS OTHERWISE SPECIFIED ALL DIMENSIONS ARE IN INCHES -TOLERANCES- .X ± .01 .XX ± .03 .XXX ± .010 ANGULAR ± 2°		DRAWN B. W.	10-10-97	BUTTERFIELD INDUSTRIES. ROCHESTER, MINNESOTA.
		CHECKED J.W.	11-21-97	
PROPRIETARY NOTICE BUTTERFIELD INDUSTRIES, INC. PROPRIETARY RIGHTS ARE INCLUDED IN THE INFORMATION DISCLOSED HEREIN. NEITHER THIS DOCUMENT NOR THE INFORMATION DISCLOSED HEREIN SHALL BE REPRODUCED, USED OR DISCLOSED IN WHOLE OR IN PART WITHOUT THE WRITTEN PERMISSION OF BUTTERFIELD INDUSTRIES, INC. THE FOREGOING DOES NOT APPLY TO VENDOR DATA.		ENGR J.W.	11-21-97	AIR/OIL SEPERATOR INSTL
		STRESS		
PART DISH P/N:	NEXT ASSY	USED ON	APPROV W.B.	11-29-97
APPLICATION			SCALE NONE	REV LTR D

REVISIONS			
REV	DESCRIPTION	DATE	APPROVED
A	ADD -101 PAD TO L/M.	02-15-98	W. B.
B	ADDED MODEL 300/B300 TO APPLICATION BLOCK	10-27-98	W. B.
C	REVISED HOSE AND CLAMP P/N. EXISTING INSTALLATIONS SATISFACTORY.	04-25-99	W. B.
D	CHANGED DRAWING NUMBER WAS BI-6002	09-22-01	W.B.



-3 INSTL

L/H ENGINE
VIEW LOOKING AFT AT FIREWALL

-5 INSTL

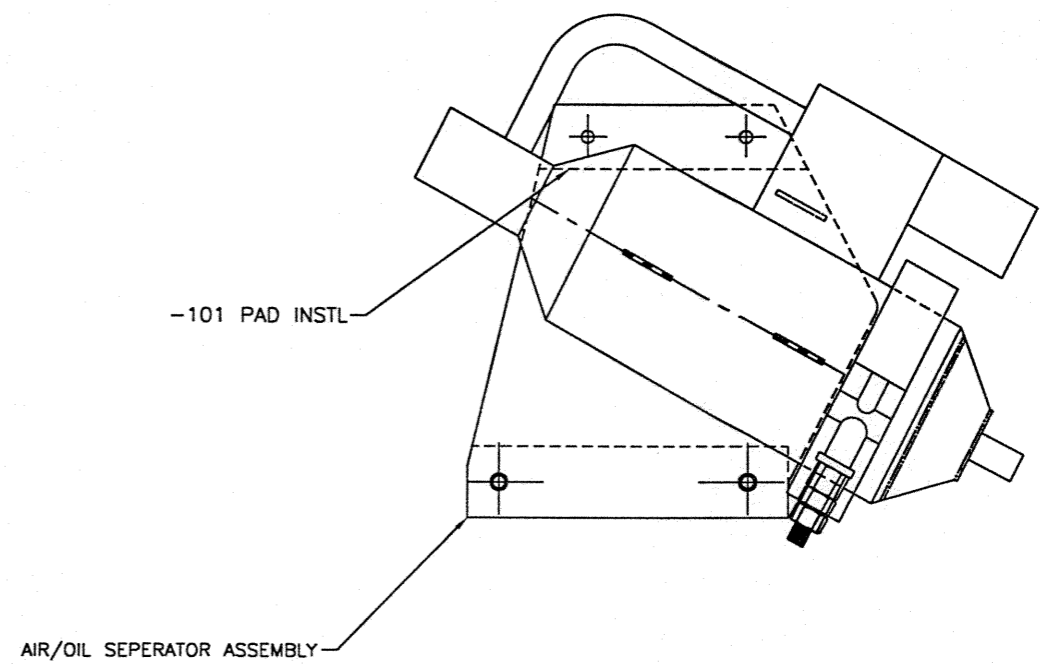
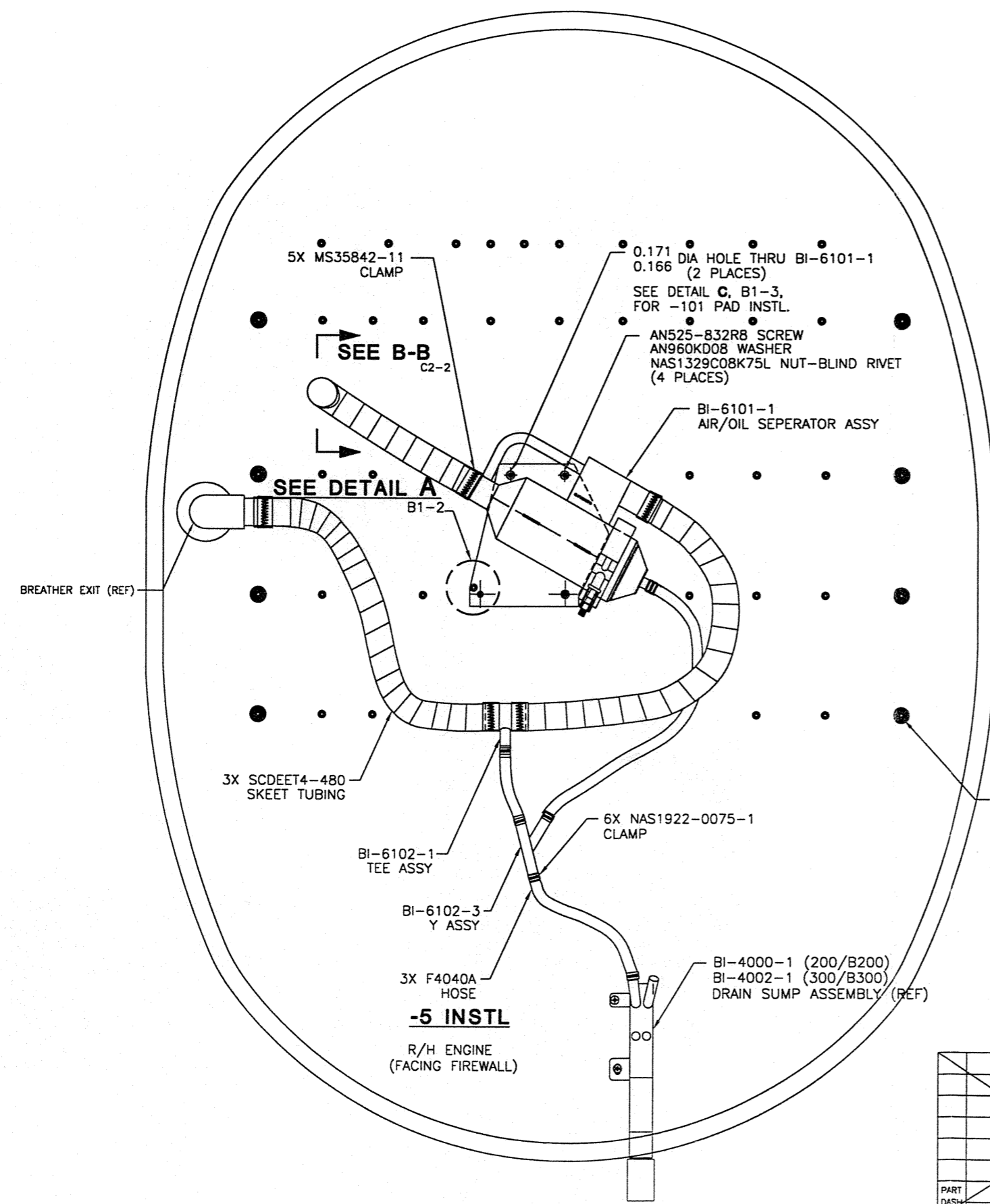
R/H ENGINE
VIEW LOOKING AFT AT FIREWALL

REMOVALS

QTY REQ'D	ITEM NO.	PART NUMBER	DESCRIPTION	MATERIAL/SPECIFICATION	FINISH	PT MK	ZONE	REV LTR
2'	2'	F4040A	HOSE	3/8" I.D. X 1/2 O.D. TYGON TUBING UNIVERSAL PLASTIC. PORTLAND, OR.				
5'	3'	SCDEET4-480	SKEET TUBING	1.0" I.D. X 12' LONG				
6	4	MS35842-11	CLAMP	1.0"				
6	2	NAS1922-0075-1	CLAMP	3/8"				
4	4	NAS1329H08K75L	NUT-BLIND RIVET					
4	4	AN960KD08	WASHER					
4	4	AN525-832R8	SCREW					
1	1	BI-6002-3	"Y" ASSY	BUTTERFIELD INDUSTRIES ROCHESTER, MN.				
1	1	BI-6002-1	TEE ASSY	BUTTERFIELD INDUSTRIES ROCHESTER, MN.				
1	1	BI-6101-1	AIR/OIL SEPARATOR	BUTTERFIELD INDUSTRIES ROCHESTER, MN.				
1	1	-101	PAD	1.0 X 4.0 X 0.0625 THK NEOPRENE RUBBER WITH SELF-ADHESIVE				
-	1	-5	INSTL R.H.					
-	1	-3	INSTL L.H.					
-	-	-1	INSTL KIT					

LIST OF MATERIAL		DRAWN		CHECKED		ENGR		STRESS		APPROV	
		B. W.	10/10/97	J.W.	11-21-97	J.W.	11-21-97			W.B.	11-29-97
UNLESS OTHERWISE SPECIFIED ALL DIMENSIONS ARE IN INCHES -TOLERANCES-				BUTTERFIELD INDUSTRIES, ROCHESTER, MINNESOTA.				AIR/OIL SEPERATOR INSTL			
.X ± .01 .XX ± .03 .XXX ± .010 ANGULAR ± 2'				PROPRIETARY NOTICE BUTTERFIELD INDUSTRIES, INC. PROPRIETARY RIGHTS ARE INCLUDED IN THE INFORMATION DISCLOSED HEREIN. NEITHER THIS DOCUMENT NOR THE INFORMATION DISCLOSED HEREIN SHALL BE REPRODUCED, USED OR DISCLOSED IN WHOLE OR IN PART WITHOUT THE WRITTEN PERMISSION OF BUTTERFIELD INDUSTRIES, INC. THE FOREGOING DOES NOT APPLY TO VENDOR DATA.				SIZE D DWG NO. BI-6001 REV LTR D			
APPLICATION		NEXT ASSY		USED ON		SCALE NONE		Rlse DATE		SHEET 1 OF 3	

REVISIONS			
REV	DESCRIPTION	DATE	APPROVED
A	ADD DETAIL C	02-15-98	W. B.
B	ADDED BI-4002-1 DRAIN SUMP ASSEMBLY (REF)	10-27-98	W. B.
C	REVISED HOSE AND CLAMP P/N. EXISTING INSTALLATIONS SATISFACTORY.	04-25-99	W. B.
D	CHANGED DRAWING NUMBER WAS BI-6002	09-22-01	W.B.



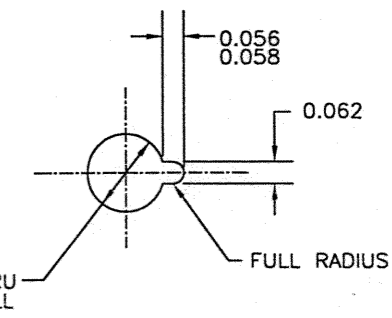
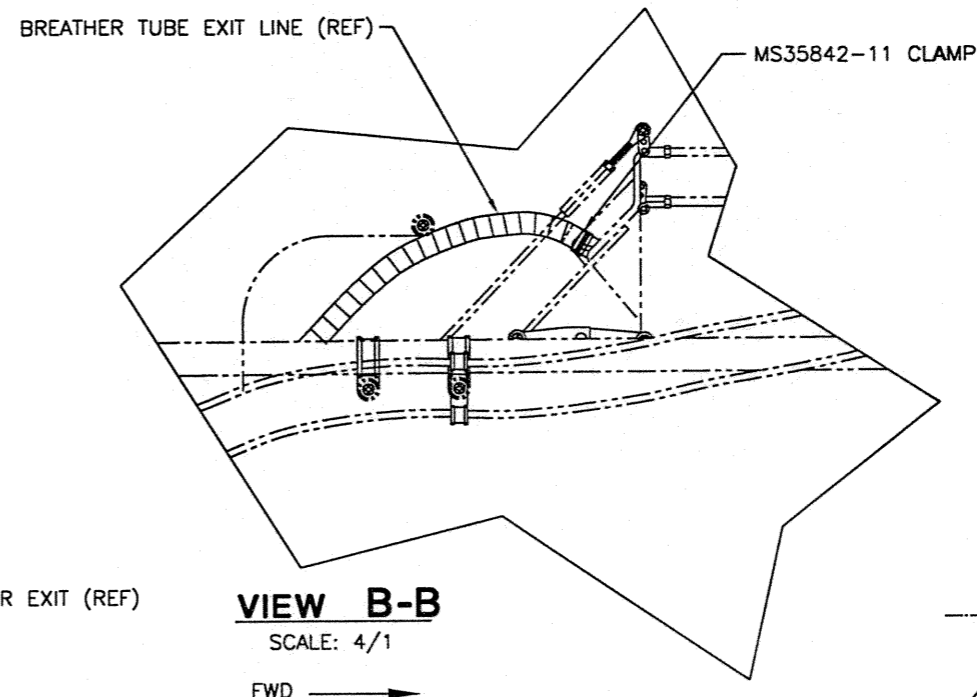
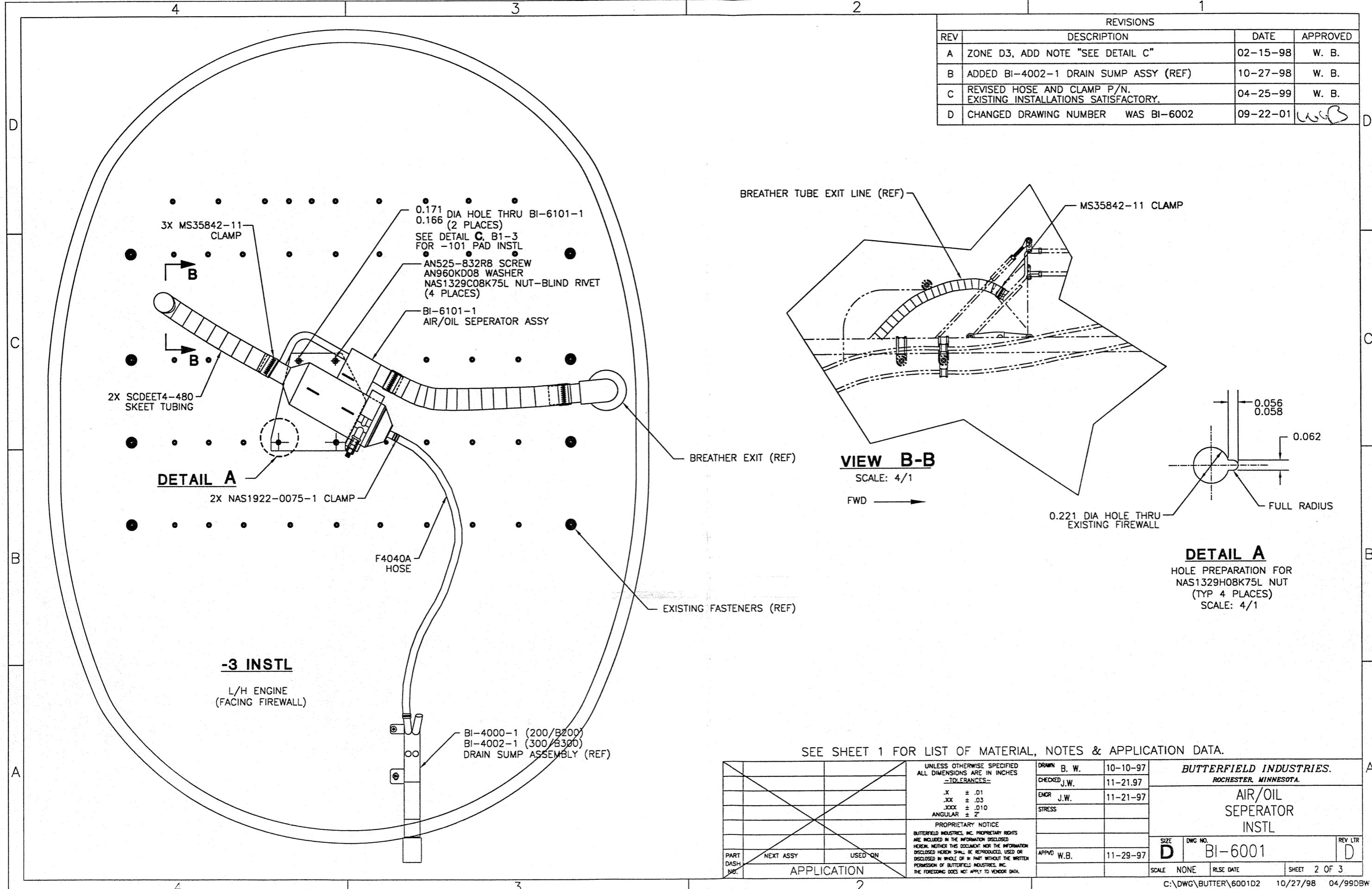
DETAIL C

AFTER UPPER MOUNT HOLES HAVE BEEN DRILLED TO FINAL SIZE AND DEBURRED. HOLD -101 RUBBER PAD IN PLACE, MARK AND PREPUNCH, PEEL BACKING AND APPLY TO MOUNTING FLANGE AS SHOWN, INSURING TO ALIGN HOLES. TRIM EXCESS RUBBER FROM ENDS.

SEE SHEET 1 FOR LIST OF MATERIAL, NOTES & APPLICATION DATA.

PART DASH NO.	NEXT ASSY	USED ON	UNLESS OTHERWISE SPECIFIED ALL DIMENSIONS ARE IN INCHES -TOLERANCES- .X ± .01 .XX ± .03 .XXX ± .010 ANGULAR ± Z° PROPRIETARY NOTICE BUTTERFIELD INDUSTRIES, INC. PROPRIETARY RIGHTS ARE INCLUDED IN THE INFORMATION DISCLOSED HEREIN. NEITHER THIS DOCUMENT NOR THE INFORMATION DISCLOSED HEREIN SHALL BE REPRODUCED, USED OR DISCLOSED IN WHOLE OR IN PART WITHOUT THE WRITTEN PERMISSION OF BUTTERFIELD INDUSTRIES, INC. THE FOREGOING DOES NOT APPLY TO VENDOR DATA.	DRAWN B. W. 10-10-97 CHECKED J.W. 11-21-97 ENGR J.W. 11-21-97 STRESS	BUTTERFIELD INDUSTRIES. ROCHESTER, MINNESOTA. AIR/OIL SEPERATOR INSTL	SIZE D DWG NO. BI-6001 REV LTR D
	APPLICATION			APPVD W.B. 11-29-97		SCALE NONE RLSE DATE SHEET 3 OF 3

REVISIONS			
REV	DESCRIPTION	DATE	APPROVED
A	ZONE D3, ADD NOTE "SEE DETAIL C"	02-15-98	W. B.
B	ADDED BI-4002-1 DRAIN SUMP ASSY (REF)	10-27-98	W. B.
C	REVISED HOSE AND CLAMP P/N. EXISTING INSTALLATIONS SATISFACTORY.	04-25-99	W. B.
D	CHANGED DRAWING NUMBER WAS BI-6002	09-22-01	W.B.



DETAIL A
HOLE PREPARATION FOR
NAS1329H08K75L NUT
(TYP 4 PLACES)
SCALE: 4/1

DETAIL A

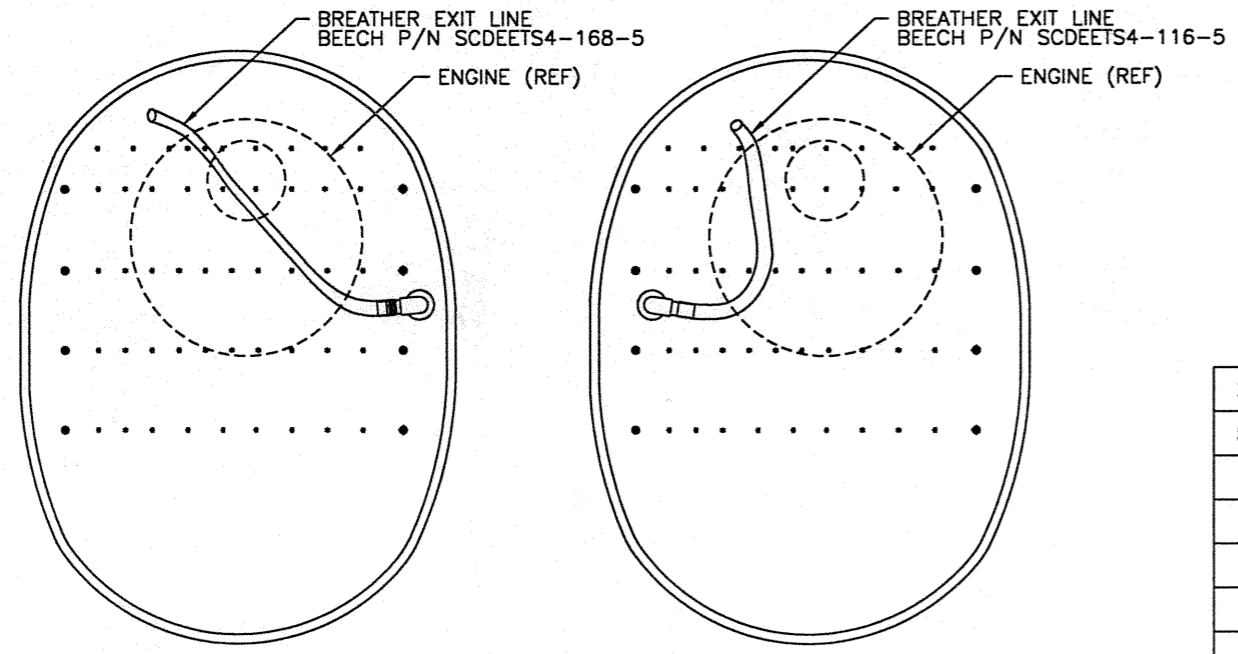
VIEW B-B
SCALE: 4/1

-3 INSTL
L/H ENGINE
(FACING FIREWALL)

SEE SHEET 1 FOR LIST OF MATERIAL, NOTES & APPLICATION DATA.

PART DASH NO.	NEXT ASSY	USED QTY	APPLICATION	UNLESS OTHERWISE SPECIFIED ALL DIMENSIONS ARE IN INCHES -TOLERANCES-	DRAWN B. W. 10-10-97	BUTTERFIELD INDUSTRIES. ROCHESTER, MINNESOTA.
				.X ± .01 .XX ± .03 .XXX ± .010 ANGULAR ± 2'	CHECKED J.W. 11-21-97	
PROPRIETARY NOTICE BUTTERFIELD INDUSTRIES, INC. PROPRIETARY RIGHTS ARE INCLUDED IN THE INFORMATION DISCLOSED HEREIN. NEITHER THIS DOCUMENT NOR THE INFORMATION DISCLOSED HEREIN SHALL BE REPRODUCED, USED OR DISCLOSED IN WHOLE OR IN PART WITHOUT THE WRITTEN PERMISSION OF BUTTERFIELD INDUSTRIES, INC. THE FOREGOING DOES NOT APPLY TO VENDOR DATA.				ENGR J.W. 11-21-97	SIZE D	DWG NO. BI-6001
				APPROV W.B. 11-29-97	SCALE NONE	REV LTR D
					RELSE DATE	SHEET 2 OF 3

REVISIONS			
REV	DESCRIPTION	DATE	APPROVED
A	ADD -101 PAD TO L/M.	02-15-98	W. B.
B	ADDED MODEL 300/B300 TO APPLICATION BLOCK	10-27-98	W. B.
C	REVISED HOSE AND CLAMP P/N. EXISTING INSTALLATIONS SATISFACTORY.	04-25-99	W. B.
D	CHANGED DRAWING NUMBER WAS BI-6002	09-22-01	W.B.



-3 INSTL
L/H ENGINE
VIEW LOOKING AFT AT FIREWALL

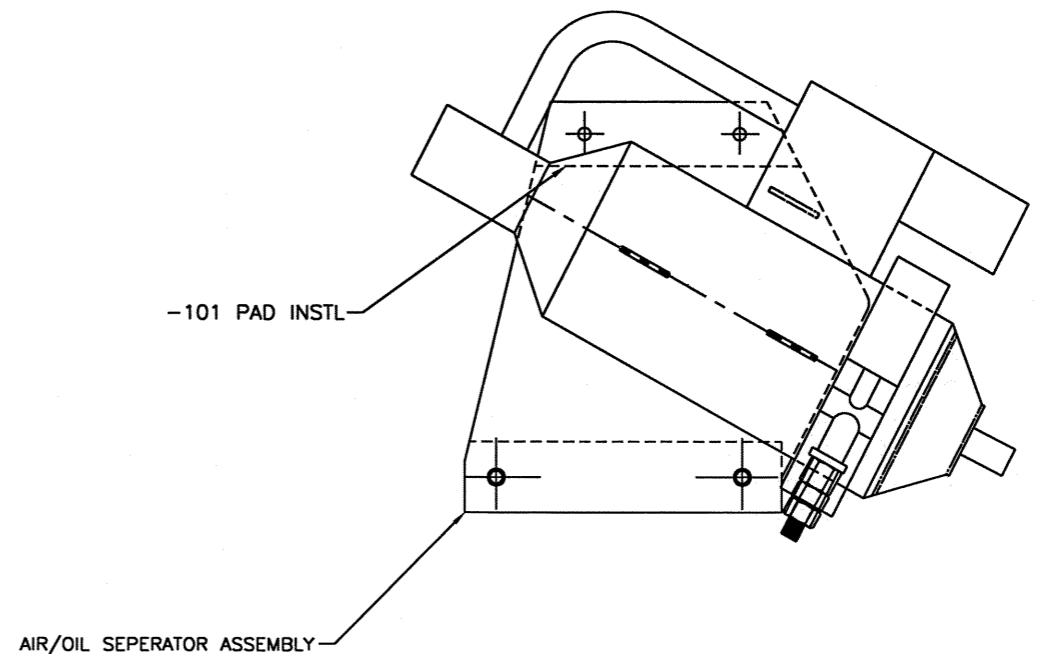
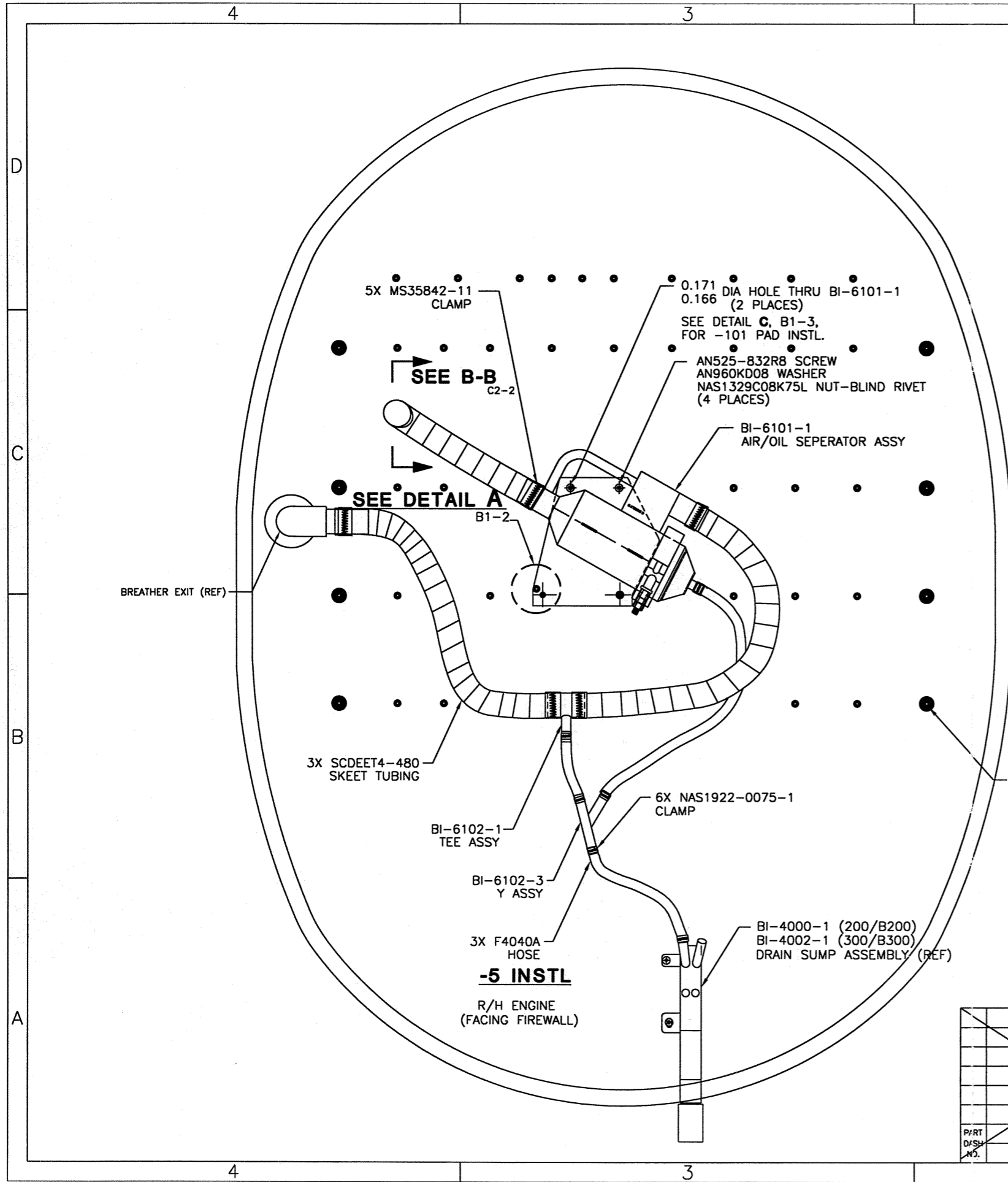
-5 INSTL
R/H ENGINE
VIEW LOOKING AFT AT FIREWALL

REMOVALS

QTY REQ'D	ITEM NO.	PART NUMBER	DESCRIPTION	MATERIAL/SPECIFICATION	FINISH	PT MK	ZONE	REV LTR
		F4040A	HOSE	3/8" I.D. X 1/2 O.D. TYGON TUBING UNIVERSAL PLASTIC, PORTLAND, OR.				
		SCDEET4-480	SKEET TUBING	1.0" I.D. X 12' LONG				
		MS35842-11	CLAMP	1.0"				
		NAS1922-0075-1	CLAMP	3/8"				
		NAS1329H08K75L	NUT-BLIND RIVET					
		AN960KD08	WASHER					
		AN525-B32R8	SCREW					
		BI-6002-3	"Y" ASSY	BUTTERFIELD INDUSTRIES ROCHESTER, MN.				
		BI-6002-1	TEE ASSY	BUTTERFIELD INDUSTRIES ROCHESTER, MN.				
		BI-6101-1	AIR/OIL SEPARATOR	BUTTERFIELD INDUSTRIES ROCHESTER, MN.				
		-101	PAD	1.0 X 4.0 X 0.0625 THK NEOPRENE RUBBER WITH SELF-ADHESIVE				
		-5	INSTL R.H.					
		-3	INSTL L.H.					
		-1	INSTL KIT					

UNLESS OTHERWISE SPECIFIED ALL DIMENSIONS ARE IN INCHES -TOLERANCES-		DRAWN B. W. 10/10/97 CHECKED J.W. 11-21-97 ENGR J.W. 11-21-97 STRESS APPROV W.B. 11-29-97	BUTTERFIELD INDUSTRIES. ROCHESTER, MINNESOTA. AIR/OIL SEPERATOR INSTL
X ± .01 .XX ± .03 .XXX ± .010 ANGULAR ± 2°		SIZE D DWG NO. BI-6001 REV LTR D	
PROPRIETARY NOTICE BUTTERFIELD INDUSTRIES, INC. PROPRIETARY RIGHTS ARE INCLUDED IN THE INFORMATION DISCLOSED HEREIN. NEITHER THIS DOCUMENT NOR THE INFORMATION DISCLOSED HEREIN SHALL BE REPRODUCED, USED OR DISCLOSED IN WHOLE OR IN PART WITHOUT THE WRITTEN PERMISSION OF BUTTERFIELD INDUSTRIES, INC. THE FOREGOING DOES NOT APPLY TO VENDOR DATA.		SCALE NONE RLSE DATE SHEET 1 OF 3	

REVISIONS			
REV	DESCRIPTION	DATE	APPROVED
A	ADD DETAIL C	02-15-98	W. B.
B	ADDED BI-4002-1 DRAIN SUMP ASSEMBLY (REF)	10-27-98	W. B.
C	REVISED HOSE AND CLAMP P/N. EXISTING INSTALLATIONS SATISFACTORY.	04-25-99	W. B.
D	CHANGED DRAWING NUMBER WAS BI-6002	09-22-01	W.B.



DETAIL C

AFTER UPPER MOUNT HOLES HAVE BEEN DRILLED TO FINAL SIZE AND DEBURRED. HOLD -101 RUBBER PAD IN PLACE, MARK AND PREPUNCH, PEEL BACKING AND APPLY TO MOUNTING FLANGE AS SHOWN, INSURING TO ALIGN HOLES. TRIM EXCESS RUBBER FROM ENDS.

SEE SHEET 1 FOR LIST OF MATERIAL, NOTES & APPLICATION DATA.

PART NO. NEXT ASSY USED ON APPLICATION		UNLESS OTHERWISE SPECIFIED ALL DIMENSIONS ARE IN INCHES -TOLERANCES- .X ± .01 .XX ± .03 .XXX ± .010 ANGULAR ± 2°		DRAWN B. W. 10-10-97 CHECKED J.W. 11-21-97 ENGR J.W. 11-21-97 STRESS	BUTTERFIELD INDUSTRIES. ROCHESTER, MINNESOTA.
		PROPRIETARY NOTICE BUTTERFIELD INDUSTRIES, INC. PROPRIETARY RIGHTS ARE INCLUDED IN THE INFORMATION DISCLOSED HEREIN. NEITHER THIS DOCUMENT NOR THE INFORMATION DISCLOSED HEREIN SHALL BE REPRODUCED, USED OR PERMITTED OF BUTTERFIELD INDUSTRIES, INC. THE FOREGOING DOES NOT APPLY TO VENDOR DATA.		APPROV W.B. 11-29-97	SIZE D DWG NO. BI-6001 REV LTR D
		SCALE NONE		PLSE DATE	SHEET 3 OF 3