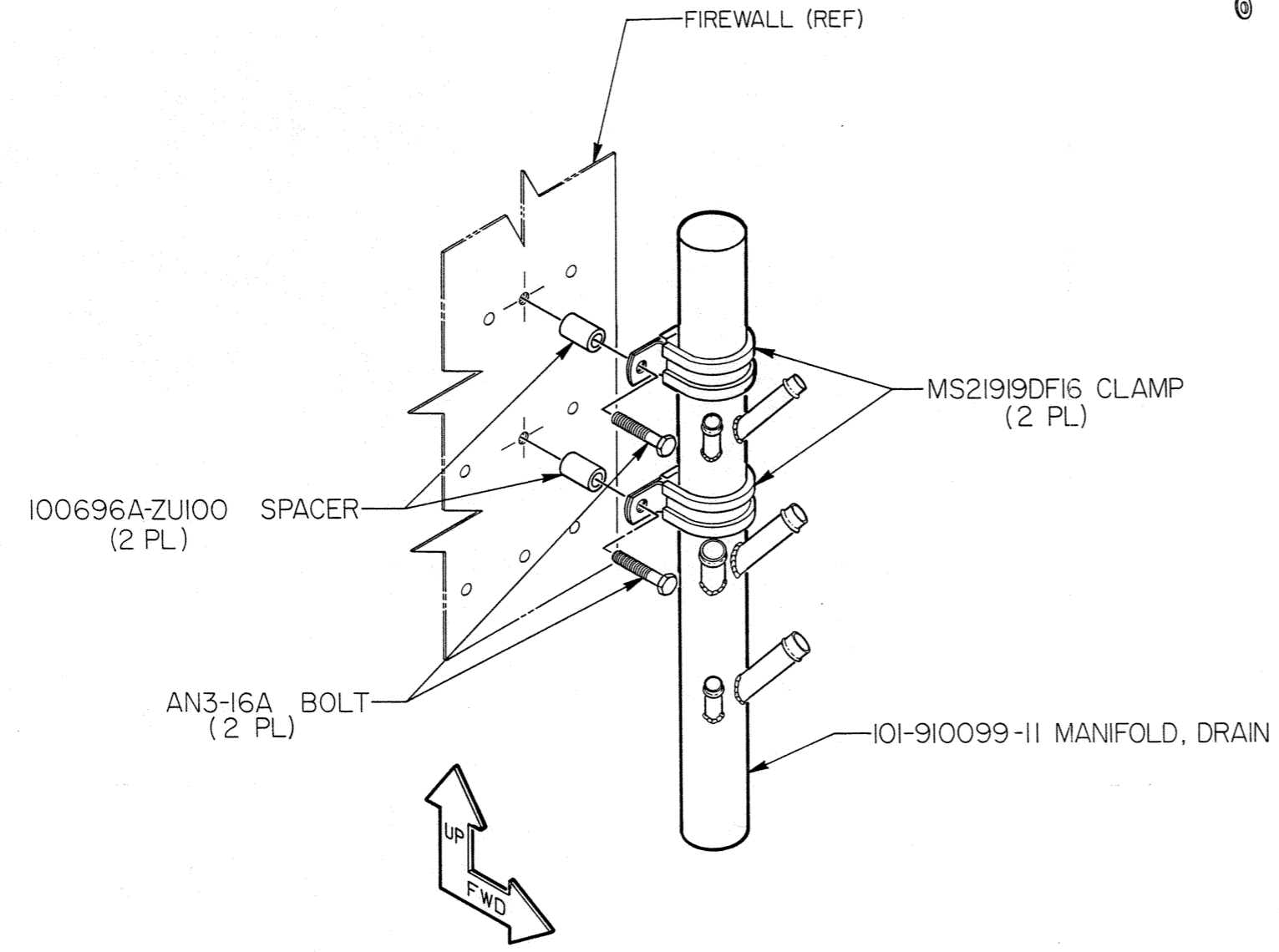
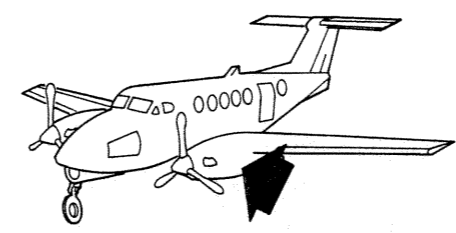


REVISION			
REV	DESCRIPTION	DATE	APPROVED
A	SEE DCN A DATED 12-15-88	12-15-88	



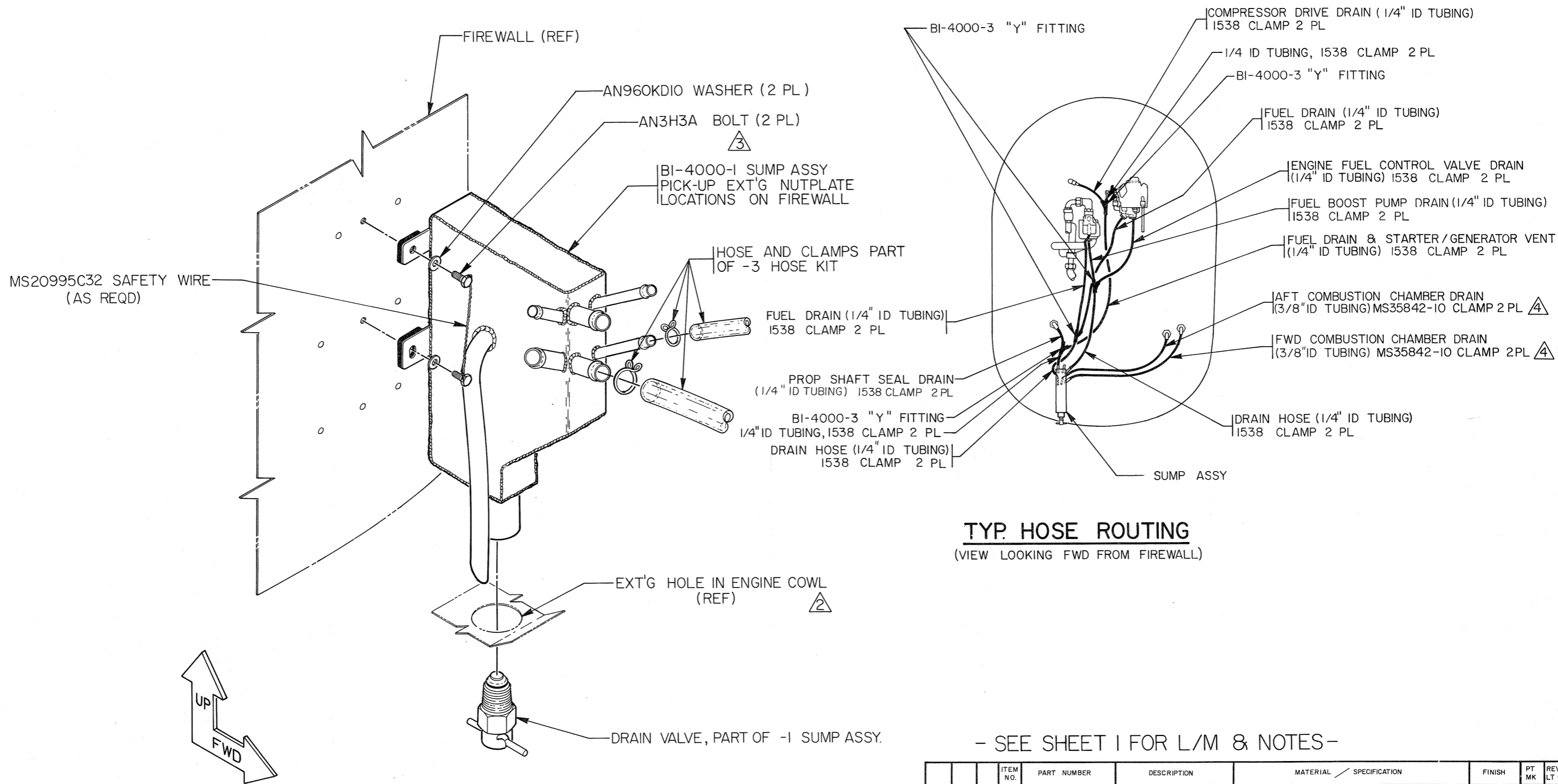
MANIFOLD REMOVAL
TYPICAL LH. AND RH. ENGINES

- ⚠ 1552 X 10 CLAMP OPTIONAL TO MS35842-10 UNTIL SUPPLY OF 1552 X 10 IS EXHAUSTED
 - ⚠ INSTALL BOLTS PER EA-AC 43.13
 - ⚠ SLIGHT ENLARGEMENT OF EXT'G HOLE PERMISSABLE FOR CLEARANCE OF DRAIN VALVE AND TUBE
- NOTES: ⚠ OPTIONAL HOSE KIT SEE INSTALLATION INSTRUCTIONS

QTY REQ'D	ITEM NO.	PART NUMBER	DESCRIPTION	MATERIAL / SPECIFICATION	FINISH	PT MK	REV LTR
8		MS35842-10	CLAMP ⚠				A
8		1552 X 10 ⚠	CLAMP	WEATHER HEAD DIVISION OF DANA CORP. CHURUBUSCO, IND.			A
42		1538	CLAMP	WEATHER HEAD DIVISION OF DANA CORP. CHURUBUSCO, IND.			
1		F-4040-A	HOSE	3/8 ID X 1/2 OD TYGON TUBING 12' NOM. LG			
1		F-4040-A	HOSE	1/4 ID X 3/8 OD TYGON TUBING 30' NOM. LG			
7		BI-4000-3	"Y" FITTING				
4		AN960KD10	WASHER	ALT: AN960JD10			
4		AN3H3A	BOLT				
AR		MS20995-C32	SAFETY WIRE				
2		BI-4000-1	SUMP ASSY				
⊗	⚠	-3	HOSE KIT				B
⊗	⚠	-1	SUMP KIT INST'L				B

UNLESS OTHERWISE SPECIFIED DIMENSIONS ARE IN INCHES - TOLERANCES -		DRAWN R. POYNS 8-31-88		BUTTERFIELD INDUSTRIES	
DECIMALS .0005		CHECKED MX. ANGLE 8/31/88		BOISE, IDAHO	
ANGULAR ±1°		ENGR [Signature] 8/31/88		ENGINE DRAIN SUMP INST'L	
RIVET AND BOLT E.M. ±.05		STRESS [Signature]		APPROVED [Signature] 8/31/88	
SM CORNER RADII:		PROPRIETARY NOTICE		SIZE DWG NO.	
INTERNAL .16-.19		BUTTERFIELD INDUSTRIES PROPRIETARY RIGHTS ARE INCLUDED IN THE INFORMATION DISCLOSED HEREIN. NEITHER THIS DOCUMENT NOR THE INFORMATION DISCLOSED HEREIN SHALL BE REPRODUCED OR USED OR DISCLOSED IN WHOLE OR IN PART WITHOUT THE WRITTEN PERMISSION OF BUTTERFIELD INDUSTRIES. THE FOREGOING DOES NOT APPLY TO VENDOR DATA.		D BI-1011	
EXTERNAL .00-.25				REV LTR	
SM BEND RADII:				A	
.03R & .06R ±.01				SCALE: NONE	
.09R & GREATER ±.03				RLSE DATT:	
APPLICATION				SH 1 OF 2	

REVISION			
REV	DESCRIPTION	DATE	APPROVED
A	SEE DCN A DATED 12-15-88		



TYP. HOSE ROUTING
(VIEW LOOKING FWD FROM FIREWALL)

-I DRAIN SUMP KIT INST'L
(INSTALLATION TYP. BOTH ENGINES)

- SEE SHEET I FOR L/M & NOTES -

QTY	REQ'D	ITEM NO.	PART NUMBER	DESCRIPTION	MATERIAL / SPECIFICATION	FINISH	PT MK	REV LT		
				LIST OF MATERIAL						
				UNLESS OTHERWISE SPECIFIED DIMENSIONS ARE IN INCHES - TOLERANCES -	DRAWN R. POYNS 8/31/88					
				DECIMALS .X = ±.1 .XX = ±.03 .XXX = ±.010	CHECKED MX. ANGLE 8/31/88					
				ANGULAR ± 1°	ENGR [Signature] 8/31/88					
				RIVET AND BOLT E.M. ± .05 SM CORNER RADI: INTERNAL .16 EXTERNAL .0025 SM BEND RADI: .03R & .06R ± .01 .09R & GREATER ± .03	APPROVED [Signature] 8/31/88					
				BUTTERFIELD INDUSTRIES PROPRIETARY RIGHTS ARE INCLUDED IN THE INFORMATION DISCLOSED HEREIN. NEITHER THIS DOCUMENT NOR THE INFORMATION DISCLOSED HEREIN SHALL BE REPRODUCED, USED OR DISCLOSED IN WHOLE OR IN PART WITHOUT THE WRITTEN PERMISSION OF BUTTERFIELD INDUSTRIES. THE FOREGOING DOES NOT APPLY TO VENDOR DATA.				BUTTERFIELD INDUSTRIES BOISE, IDAHO		REV LTR
				SIZE DWG NO. D BI-1011		SCALE: NONE		A		
				APPLICATION		R/SE DATE:		SH 2 OF 2		