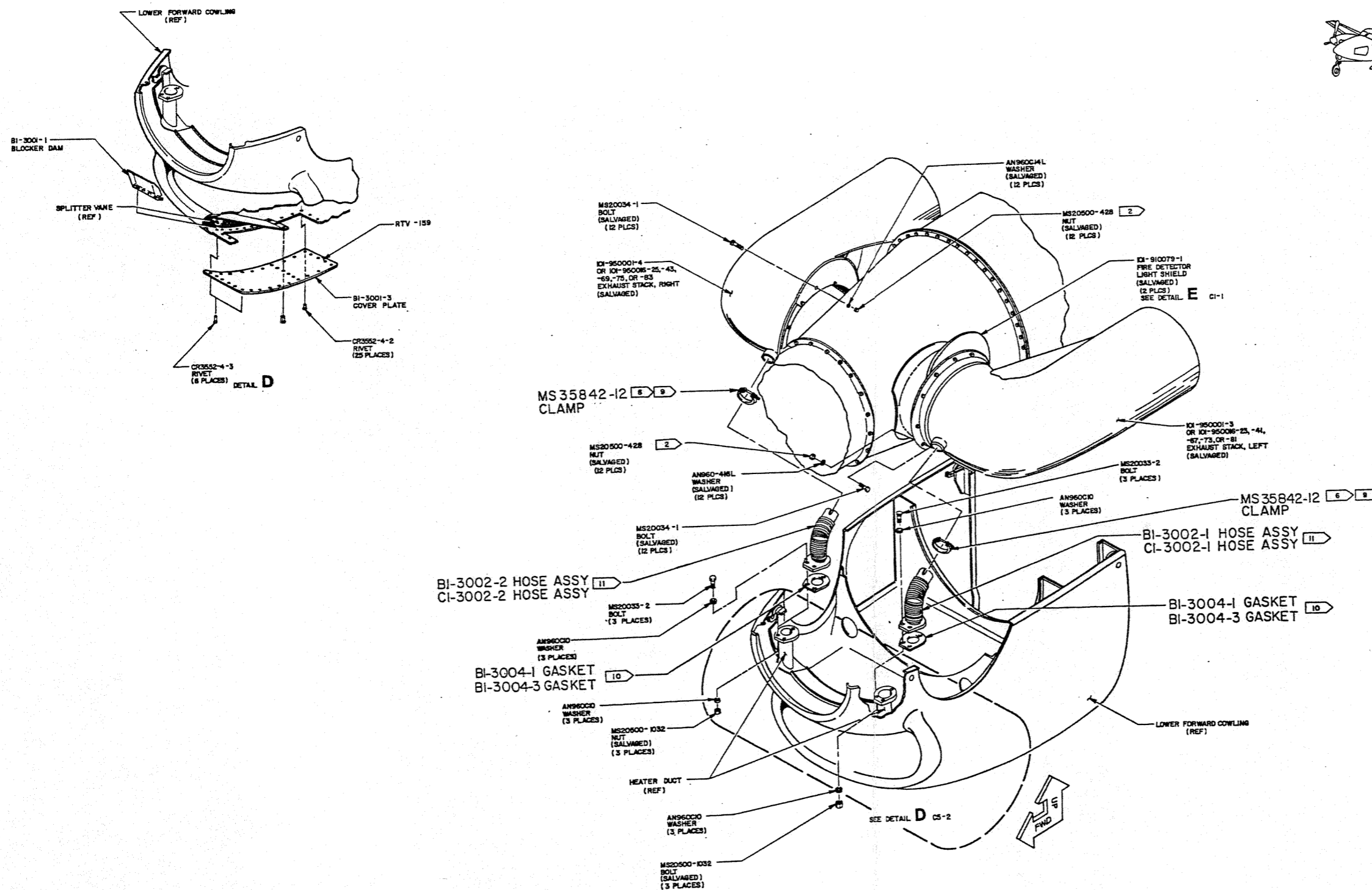




REV	DESCRIPTION	DATE	APPROVED
B	SEE DCM DATED 1/9/88	11/17/90	W. J. ...
C	SEE DCM DATED 9/21/01	9/28/01	W. J. ...
D	SEE DCM DATED 12/6/03	12/06/03	W. J. ...



**INSTALLATION**

SEE SHEET 1 FOR LIST OF MATERIAL, NOTES, AND APPLICATION DATA.

QTY	REV	ITEM NO.	PART NUMBER	DESCRIPTION	MATERIAL / SPECIFICATION	QTY REQ	REV
LIST OF MATERIAL							
UNLESS OTHERWISE SPECIFIED DIMENSIONS ARE IN INCHES - TOLERANCES -				DRAWN: J. WHITTINGTON 10/22/04			
DECIMALS				CHECKED: W. J. ... 2/28/05			
FRACTIONS				DESIGNED: W. J. ... 1/28/04			
ANGLES				STRESS: 11,000 PSI			
RIVETS AND BOLT C.H. : 0.005				BY CORNER RADIUS			
INTERNAL				SEE DETAIL D C5-2			
EXTERNAL				SEE DETAIL D C5-2			
NO HEAD RADII				SEE DETAIL D C5-2			
DIM & DEP				SEE DETAIL D C5-2			
DIM & GREATER				SEE DETAIL D C5-2			
APPLICATION				SEE DETAIL D C5-2			

BUTTERFIELD INDUSTRIES  
 FLOW THRU INLET  
 ANTI-ICE INSTALLATION  
 BI-1001